

GREAT  
RIVERS



# Great Rivers Hub

A Pathways Community HUB & Systems Change Initiative





# Overview

- Social Determinants of Health
- Pathways Community HUB model overview
- How SDOH impact HUB clients





## Social Determinants of Health Definition:

- ..are conditions in the places where people **live, learn, work, and play** that affect a wide range of health and quality-of life-risks and outcomes. - **CDC**



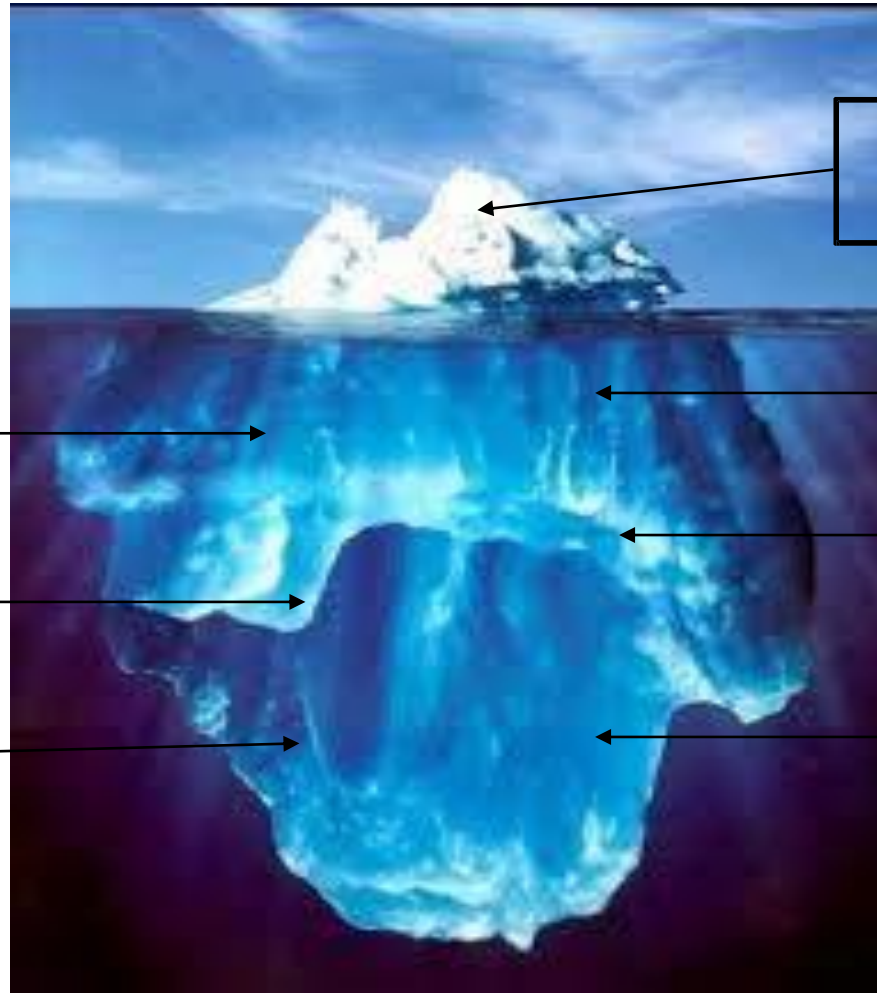




## Social Determinants of Health Definition

- "...as the conditions in which people are born, grow, live, work and age. These circumstances are shaped by the distribution of money, power, and resources at global, national, and local levels. **...social determinants of health are mostly responsible for health inequities** – the unfair and avoidable differences in health status seen within and between countries." - **WHO**

# Addressing Social Determinants of Health



Substance Use

Healthcare  
access/quality

Culture

Socioeconomic  
Status/Income

Neighborhood  
/Housing

Employment

Education

GREAT  
RIVERS



# Relationship between substance use & SDOH

---

- **Social Determinants can contribute to substance use**
  - *“Several biological, **social, environmental,** psychological, and genetic factors are associated with substance abuse. These factors can include gender, race and ethnicity, age, **income level, educational attainment,** and sexual orientation. Substance abuse is also strongly influenced by interpersonal, household, and community dynamics.” –[Healthy People 2020](#)*

# Relationship between substance use & SDOH

---

- **Substance use can impact social determinants of health:**

- *“Substance abuse—involving drugs, alcohol, or both—is associated with a range of destructive social conditions, including family disruptions, financial problems, lost productivity, failure in school, domestic violence, child abuse, and crime. ...Estimates of the total overall costs of substance abuse in the United States, including lost productivity and health- and crime-related costs, exceed \$600 billion annually” – [Healthy People 2020](#)*

# Relationship between substance use & SDOH

---

- Lack of Social Determinants can be barriers to successful treatment or recovery
  - Health insurance/coverage
  - Healthcare access/quality
  - Transportation
  - Access to technology
  - Financial situation/Employment
  - Support structures
  - Stigma within the community
  - Housing





# Relationship between substance use & SDOH

---

- Social Determinants, for communities, often require systematic changes to impact communities/individuals
- Social Determinants are interconnected to other health outcomes
- Important to address barriers in communities to good health
  - Housing
  - Food Access
  - Financial opportunity/employment at fair wages
  - Healthcare access
  - Transportation





## Bridging the Gap: The Pathways Community HUB Model



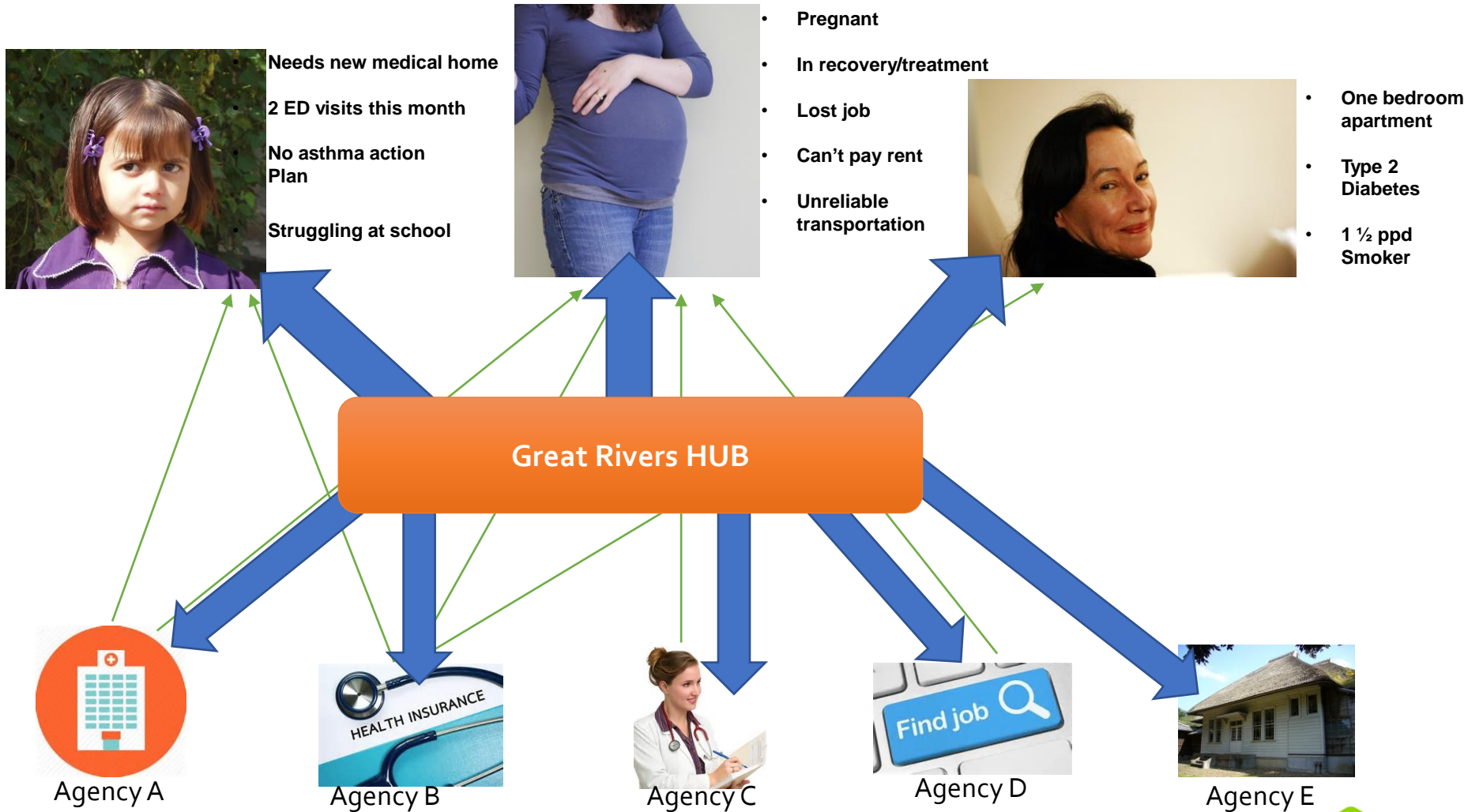
# The Pathways Community HUB Model

---

- Uses existing community resources (medical and social) more efficiently and effectively
- Addresses both SDOH & clinical health metrics simultaneously
- Focuses on common metrics to identify and track risks (risk reduction)
- Holistic community care coordination → one for the whole family
- Outcome based



# Current System vs HUB model





# Community Outreach

---

- Shifting the responsibility of the system to FIND individuals vs individuals finding resources to help them
- Targeted referral sites
- Community Care Coordinators meet individuals where they are at



# TREAT: Pathways

- Treat the “whole” person
- Each Risk = Pathway
- 20 Standard Pathways
- Finished Pathway = Outcome Achieved (Risk Factor Reduced/Eliminated) & Payment
- If outcome not achieved = Incomplete Pathway
- Outcome/value based payment

- Adult Education
- Behavioral Health
- Developmental Referral
- Development Screening
- Education
- Employment
- Family Planning
- Health Insurance
- Housing
- Immunization Referral
- Immunization Screening
- Lead
- Medical Home
- Medical Referral
- Medication Assessment Chart/ Medication Assessment Pathway
- Medication Management
- Postpartum
- Pregnancy
- Smoking Cessation
- Social Services Referral

# Great Rivers HUB Criteria

---

- Based on community needs identified:
  - Frequent emergency room utilizer
  - At-risk pregnant mother
  - Elementary aged youth with chronic absenteeism
  - La Crosse School District youth/family experiencing homelessness
  - Cardiovascular Disease/Hypertension/Hyperlipidemia
  - Type 2 Diabetes



# Referrals and Enrolled Aug 2017-Feb 2021

- Total number of referrals: **654**
- Total number of enrolled participants: **476**
- Percentage of enrolled participants that identified addiction or substance use at referral:
  - **289/ 476 clients referred with substance use identified= 61% (including tobacco and alcohol)**





## Pathway Completion for HUB enrollees with Substance Use



Pathway	Opened	Completed	Finished- Incomplete
Adult Learning	11	2	9
Behavioral Health	59	27	25
Developmental Screening	1	1	0
Education	1233	1196	0
Employment	48	14	26
Family Planning	13	8	5
Health Insurance	41	27	9
Housing	144	48	55
Immunization Referral	15	4	6
Immunization Screening	42	27	2
Medical Home	72	35	12
Medical Referral	280	155	78
Medication Assessment	105	79	20
Medication Management	12	7	1
Postpartum	12	8	2
Pregnancy	17	15	1 (low birth weight)
Social Service Referral	1309	902	302
Tobacco Cessation	130	8	69

# Top Medical Referrals

---

<b>Top 5 Medical Referral for Total HUB Population</b>	<b># of Referral Pathways Opened</b>
<b>Dental</b>	136
<b>Mental Health</b>	77
<b>Primary Care</b>	58
<b>Specialty Medical Care</b>	53
<b>Vision</b>	25

<b>Top 5 Medical Referral for Clients with Substance Use</b>	<b># of Referral Pathways Opened</b>
<b>Dental</b>	100 (74% of total)
<b>Mental Health</b>	52 (66% of total)
<b>Primary Care</b>	31 (53% of total)
<b>Vision</b>	20 (80% of total)
<b>Specialty Medical Care</b>	19 (36% of total)

# Top Social Service Referrals

---

<b>Top 5 Social Service Referrals for Total HUB Population</b>	<b># of Referral Pathways Opened</b>
<b>Clothing Assistance</b>	300
<b>Transportation Assistance</b>	273
<b>Food Assistance</b>	238
<b>Financial Assistance</b>	210
<b>Furniture Assistance</b>	100

<b>Top 5 Social Service Referrals for Clients with Substance Use</b>	<b># of Referral Pathways Opened</b>
<b>Transportation Assistance</b>	204 (75% of total)
<b>Food Assistance</b>	151 (63% of total)
<b>Clothing Assistance</b>	143 (47% of total)
<b>Financial Assistance</b>	139 (66% of total)
<b>Furniture Assistance</b>	63 (63% of total)





## Questions?

- Lindsey Purl, Director of Great Rivers HUB.  
[lpurl@gruw.org](mailto:lpurl@gruw.org)
- Abby Waters, Operations Manager for Great Rivers HUB.  
[awaters@gruw.org](mailto:awaters@gruw.org)

